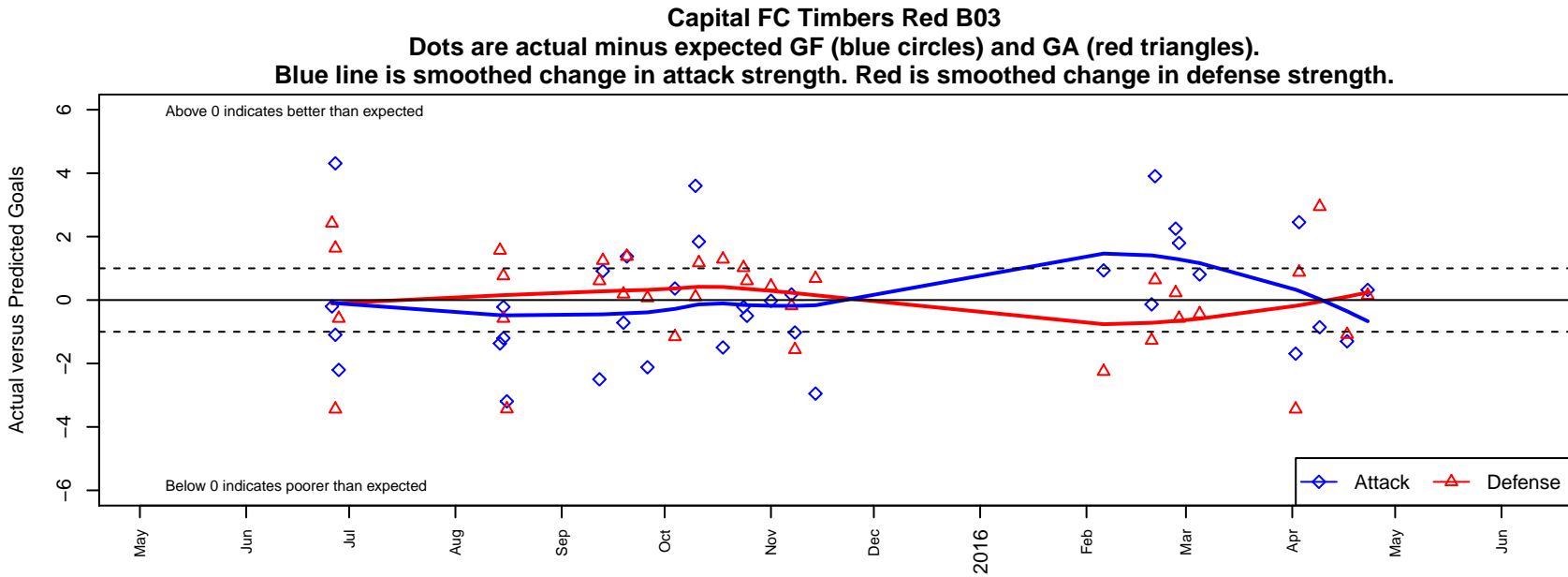


Capital FC Timbers Red B03

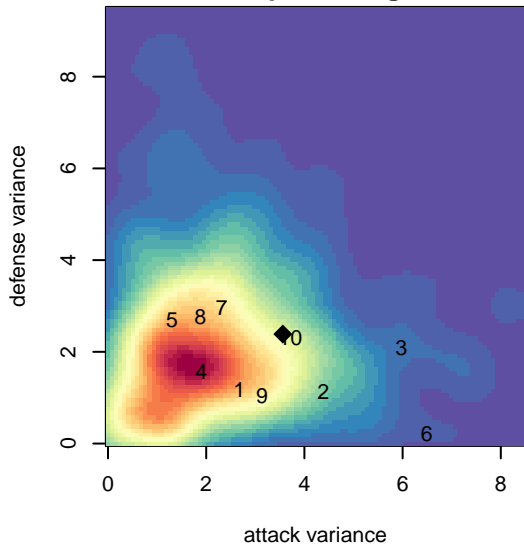
Capital FC
 Salem, OR
 B03 total strength=709
 attack=1.4 defense=0.38
 fall league = PTT B03 Div 1 Green
 spr league = Spr OYS B03 Premier White
 notes= was CFC Black (A) team but
 Red is A in Timbers

alt names used:
 Capital FC Timbers B03 Red
 CFC Timbers B03 Red
 Capital FC Timbers Boys 2003 Red
 Capital FC Timbers Boys 2003 Red
 Capital FC Timbers Boys 2003 Red
 Capital FC Timbers Boys 2003 Red

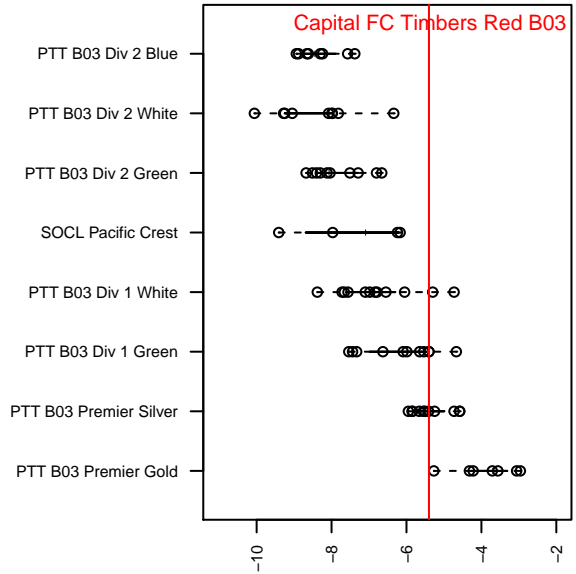
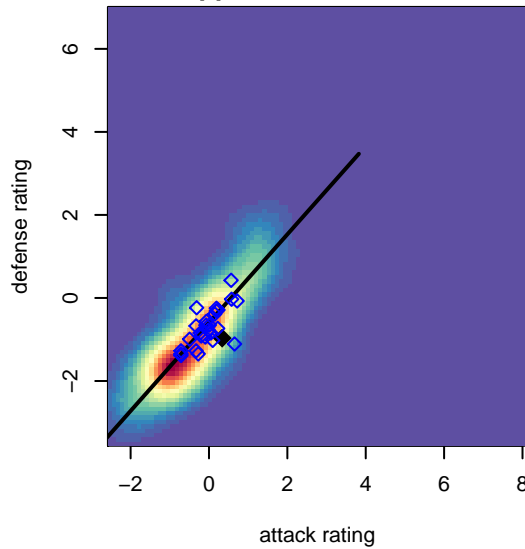
Venues played:
 2015 Capital Cup BU12 Gold
 2015 Mt Hood Challenge U12
 2015 PTT B03 Division 1 Green
 2015 OYS Presidents Cup B03
 2015 Spr OYS B03 Premier White
 2015 OYS State Cup B03



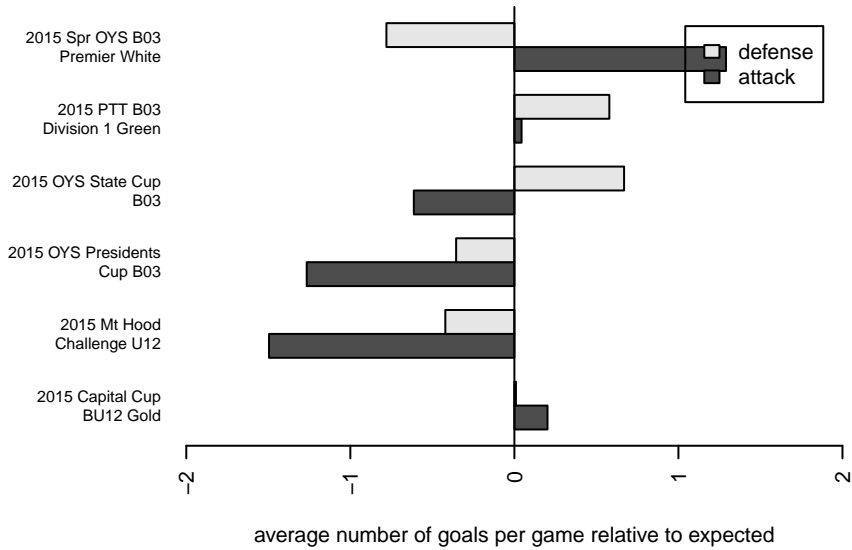
**attack and defense variance (black dot)
relative to other teams
and top 10 in region**



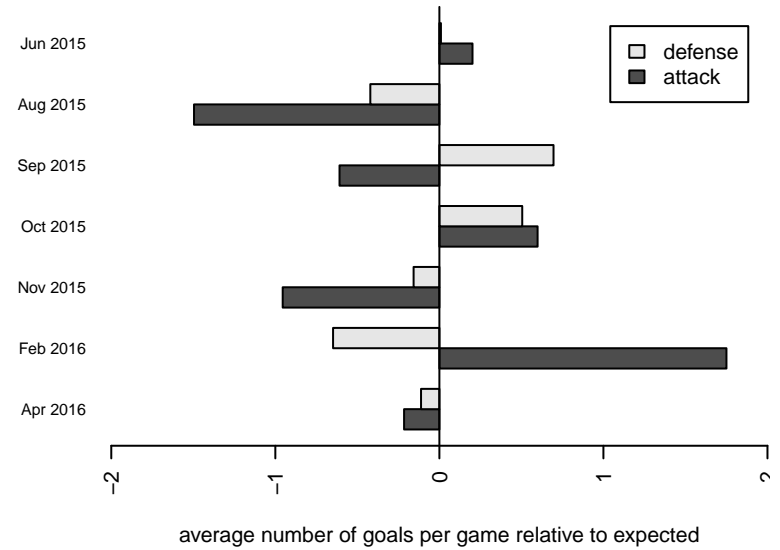
**attack and defense rating
relative to others at age
and all opponents in last 13 months**



Performance relative to 13 month average



Performance relative to 13 month average



date	home		away		venue	pred.home	pred.away
2016-04-23	NEU PDX White B03	3	Capital FC Timbers Red B03	2	2015 OYS State Cup B03	3.15	1.68
2016-04-17	Crossfire Oregon Green II B03	3	Capital FC Timbers Red B03	1	2015 OYS State Cup B03	1.91	2.30
2016-04-09	Capital FC Timbers Red B03	0	Westside Timbers Copa B03	3	2015 OYS State Cup B03	0.86	5.94
2016-04-03	BSC Portland Black-Legends B03	2	Capital FC Timbers Red B03	5	2015 Spr OYS B03 Premier White	2.87	2.55
2016-04-02	4-H FC Joga B03	6	Capital FC Timbers Red B03	1	2015 Spr OYS B03 Premier White	2.56	2.69
2016-03-05	4-H Manchester U B03	3	Capital FC Timbers Red B03	4	2015 Spr OYS B03 Premier White	2.57	3.19
2016-02-28	Capital FC Timbers Red B03	5	4-H Penarol B03	5	2015 Spr OYS B03 Premier White	3.20	4.42
2016-02-27	Capital FC Timbers Red B03	4	Washington Timbers Red B B03	3	2015 Spr OYS B03 Premier White	1.75	3.23
2016-02-21	Capital FC Timbers Red B03	6	4-H Cruz Azul B03	2	2015 Spr OYS B03 Premier White	2.10	2.64
2016-02-20	Southside SC Azul B03	3	Capital FC Timbers Red B03	2	2015 Spr OYS B03 Premier White	1.73	2.14
2016-02-06	Capital FC Timbers Red B03	4	Aloha United Atletico Black B03	5	2015 Spr OYS B03 Premier White	3.07	2.75
2015-11-14	Capital FC Timbers Red B03	2	Oregon City Thunder B03	1	2015 OYS Presidents Cup B03	4.95	1.68
2015-11-08	Capital FC Timbers Red B03	2	NEU PDX Blue B03	4	2015 OYS Presidents Cup B03	3.02	2.44
2015-11-07	FC Portland White B03	2	Capital FC Timbers Red B03	5	2015 OYS Presidents Cup B03	1.82	4.82
2015-11-01	NEU PDX Blue B03	2	Capital FC Timbers Red B03	3	2015 PTT B03 Division 1 Green	2.44	3.02
2015-10-25	Capital FC Timbers Red B03	3	PCU Red 3 B03	1	2015 PTT B03 Division 1 Green	3.50	1.60
2015-10-24	Capital FC Timbers Red B03	3	CSC Storm Navy B03	1	2015 PTT B03 Division 1 Green	3.22	2.02
2015-10-18	Capital FC Timbers Red B03	4	THUSC Carbon B03	0	2015 PTT B03 Division 1 Green	5.50	1.29
2015-10-11	Capital FC Timbers Red B03	7	Westside Timbers Copa TS B03	0	2015 PTT B03 Division 1 Green	5.16	1.17
2015-10-10	Capital FC Timbers Red B03	7	Foothills SC Celtic White B03	2	2015 PTT B03 Division 1 Green	3.40	2.10
2015-10-04	Washington Timbers Forest B03	3	Capital FC Timbers Red B03	3	2015 PTT B03 Division 1 Green	1.84	2.64
2015-09-26	Westside Timbers Samba B03	3	Capital FC Timbers Red B03	0	2015 PTT B03 Division 1 Green	3.07	2.12
2015-09-20	Capital FC Timbers Black B03	1	Capital FC Timbers Red B03	4	2015 PTT B03 Division 1 Green	2.37	2.62
2015-09-19	Capital FC Timbers Red B03	2	SESC Dragons Blue B03	2	2015 PTT B03 Division 1 Green	2.72	2.19
2015-09-13	Eastside Timbers Black B03	0	Capital FC Timbers Red B03	6	2015 PTT B03 Division 1 Green	1.25	5.08
2015-09-12	PCU Red 3 B03	1	Capital FC Timbers Red B03	1	2015 PTT B03 Division 1 Green	1.60	3.50
2015-08-16	4-H Manchester U B03	6	Capital FC Timbers Red B03	0	2015 Mt Hood Challenge U12	2.57	3.19
2015-08-15	Bend FC Timbers Red B03	4	Capital FC Timbers Red B03	1	2015 Mt Hood Challenge U12	4.76	1.22

date	home		away		venue	pred.home	pred.away
2015-08-15	4-H Penarol B03	5	Capital FC Timbers Red B03	2	2015 Mt Hood Challenge U12	4.42	3.20
2015-08-14	Capital FC Timbers Red B03	0	PCU Red B03	3	2015 Mt Hood Challenge U12	1.37	4.57
2015-06-28	Capital FC Timbers Red B03	1	4-H Penarol B03	5	2015 Capital Cup BU12 Gold	3.20	4.42
2015-06-27	Capital FC Timbers Red B03	1	4-H Cruz Azul B03	1	2015 Capital Cup BU12 Gold	2.10	2.64
2015-06-27	Capital FC Timbers Red B03	7	4-H FC Joga B03	6	2015 Capital Cup BU12 Gold	2.69	2.56
2015-06-26	4-H Penarol B03	2	Capital FC Timbers Red B03	3	2015 Capital Cup BU12 Gold	4.42	3.20